A topographic map with contour lines is visible in the background. The map shows various elevation levels with contour lines labeled with numbers like 100, 200, 320, and 400. The map is centered on a region that appears to be the Czech Republic.

CZECH OFFICE FOR SURVEYING, MAPPING AND CADASTRE

STATE ADMINISTRATION OF LAND SURVEYING AND CADASTRE

GENERAL INFORMATION

**Eng. Karel Brázdil, Ph.D.
Director of Land Survey Office**

karel.brazdil@cuzk.cz

CZECH REPUBLIC - BASIC DATA

Česká republika

(Czech Republic, Czechia)

Area: 78 870 km²

Population: 10,5 mil.

Capital city: Praha (Prague)
population 1,25 mil.



Administrative division:

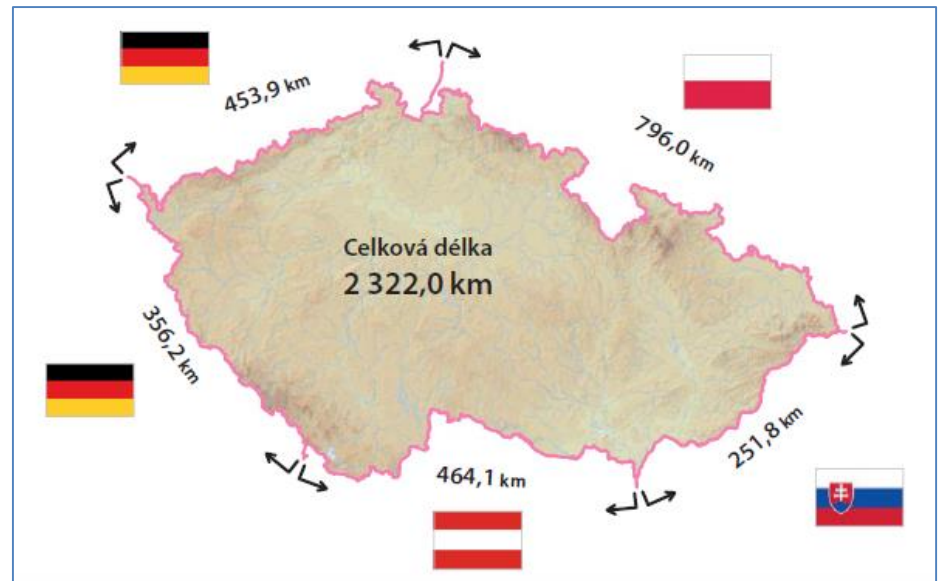
14 regions, 76 districts

6 250 municipalities

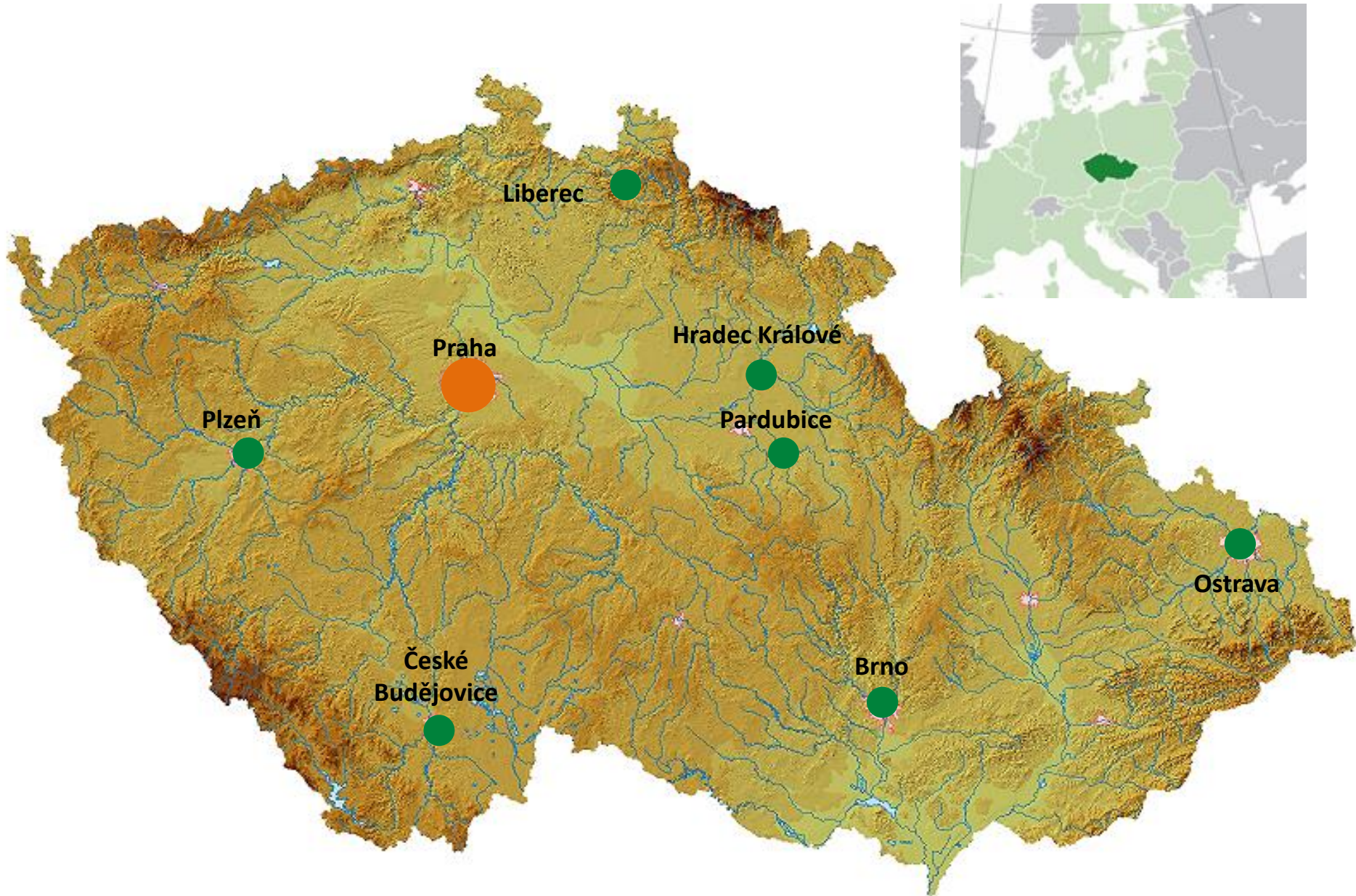
13 000 cadastre units

Geomorphology: the highest point

Sněžka 1603 m (5,259 ft),
(the lowest point 115 m)



BASIC GEOGRAPHY OF THE CZECH REPUBLIC



CZECH OFFICE FOR SURVEYING, MAPPING AND CADASTRE

ROLE AND POSITION OF ORGANISATION

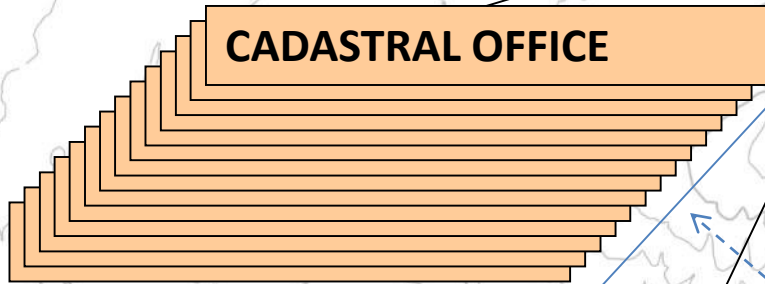
- Complete administration of the Cadastre (including legal relations to real estate property),
- Maintenance and modernisation of horizontal, vertical and gravity control in the Czech Republic,
- Large-scale mapping (cadastral maps),
- Medium-scale mapping (Base map of the Czech Republic 1 : 10 000, 1 : 25 000, 1 : 50 000, 1 : 100 000, 1 : 200 000),
- Small-scale mapping of the Czech Republic (1 : 500 000, 1 : 1 000 000),
- Creation of the Fundamental Base of Geographic Data (ZABAGED),
- Geodetic surveys and documentation of state boundaries,
- Development and maintenance of the Information System of Surveying, Mapping and Cadastre in the Czech Republic,
- Standardisation of geographical names,
- Coordination of research and international cooperation in geodesy, cartography and cadastre.

ORGANISATION

SURVEYING, MAPPING AND CADASTRE IN THE CZECH REPUBLIC

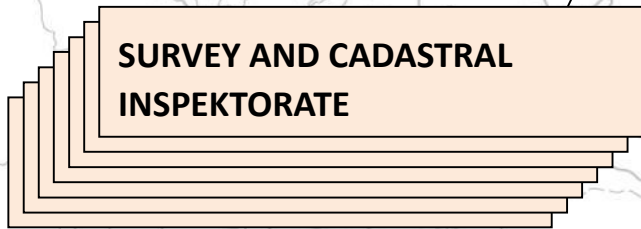
CZECH OFFICE FOR SURVEYING, MAPPING AND CADASTRE

CADASTRAL OFFICE



14 cadastral offices, 94 workplaces

**SURVEY AND CADASTRAL
INSPEKTORATE**



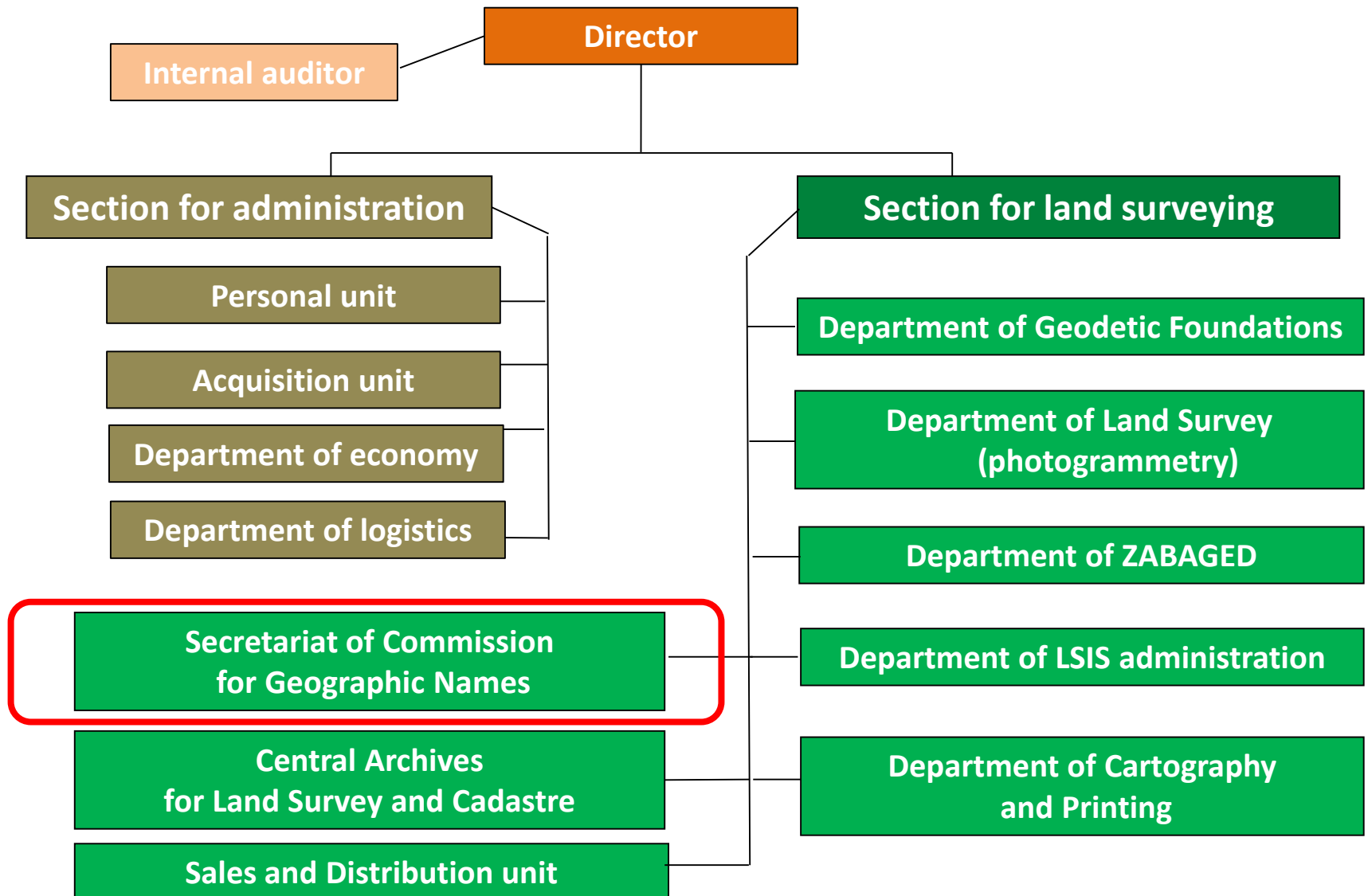
7 workplaces within CZE

LAND SURVEY OFFICE

**RESEARCH INSTITUTE
OF GEODESY, TOPOGRAPHY
AND CARTOGRAPHY**

PRIVATE GEODETIC ORGANIZATIONS

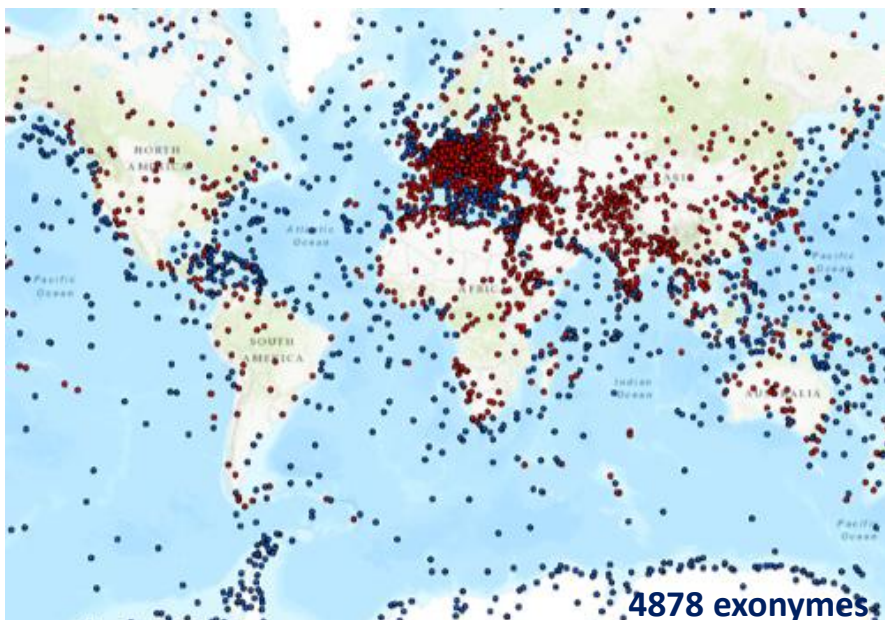
ORGANIZATION OF THE LAND SURVEY OFFICE (LSO)



COMMISSION FOR GEOGRAPHIC NAMES

ROLE AND RESPONSIBILITY

- Standardization of geographic names outside of the municipality territories
- Collection of geographical names from municipalities
- Continuously updating of the Czech gazetteer (from entire state territory)
- Standardization of exonymes
- Collection of names on Moon and Mars





ZEMĚMĚŘICKÝ ÚŘAD

LAND SURVEY OFFICE

Thank you for your attention

Karel Brázdil

karel.brazdil@cuzk.cz